

The Bulletin

RUAPEHU SKI CLUB

Volume 87, No. 4



December 2022



CONTENTS

- 2 **President's column**
- 3 **Ruapehu news**
- 5 **Working parties**
- 5 **New member**
- 6 **RAL administration**
- 7 **King Charles**
- 8 **Turoa explanation**
- 9 **RSC technical**
- 13 **Wild West sale**
- 14 **Johan Klisser**
- 17 **RSC calendar**
- 19 **Quite Remarkable**
- 22 **Interclub racing**
- 23 **Big cash boost**
- 24 **Petra qualifies**
- 25 **NZ ski champs**
- 28 **World freeride**
- 30 **World snow news**
- 32 **RSC info page**



Swiss ski instructor Linda Rubi clears new snow from the Lodge deck. Photo: Teiti Majik Nepia.

PRESIDENT'S COLUMN

Hello everyone.

Reflecting on the 2022 ski season, it was not the one we had hoped for after two years of Covid 19 restrictions.

The lack of snow on the mid and lower fields caused by the La Nina weather pattern resulted in humid wet weather and lower than anticipated occupation in all buildings.

Events such as North Island primary and secondary school races were cancelled. These bookings normally add greatly to the occupancy of our buildings during the week.

There hasn't been a season like this since 1998, which had a four week season and was also a La Nina affected year.

Hopefully we are looking at a better season for 2023. Those that did make it to the skifields experienced some good skiing on the upper mountain and trips to the crater.

Linda Rubi, our hosted instructor from Davos, has been wonderful considering the lack of snow this season at Whakapapa.

She spent many days in Happy Valley, and was very helpful in bringing up stores on her walks back up the Rockgarden at the end of the day.

After some traveling around the North Island a number of Auckland members caught up with her in November at Swashbucklers to farewell her back home.

Topping off the bad season was RAL going into voluntary administration on October 11th.

I along with a good number of RSC life pass holders attended the creditors meeting at PwC in Auckland. There were also meetings at Whakapapa and in the Wellington PwC office live streamed.

At this meeting the administrators were confirmed as PwC, and it was voted in that there should be a creditors committee.

Arrangements were made for representatives of the Life Pass Holders group to vote on who would represent LPH. Then there was time for questions.

On November 2nd life pass holders were informed that Robert Krebs, a senior business analyst and RSC member, and Sam Clarkson, owner of the Skotel in Whakapapa village, had been voted in as representatives of the life pass holders on the creditors committee.

At the time of writing the crown and ANZ are providing emergency funding to get RAL through to Christmas.

This gives the administrators time to work on a plan to ensure the best possible opportunity to open in 2023. The watershed meeting will be held where we will find out the final outcome of the administration process.

A save Mount Ruapehu group has created a website <https://www.savemtruapehu.org.nz> and a Facebook group to represent all the communities involved in skiing and boarding at Mt Ruapehu.

They are looking at the possibility of crowd funding RAL or a similar entity. It's a good place to check up on the latest updates and support the cause.

Summer is on its way and there is still much to do in the Ruapehu District. Check out <https://www.visitruapehu.com/see-and-do>. Our Chalet building in Whakapapa and our building in the Alpine Village in Ohakune are available as a base for summer activities including tramping, biking, and fishing.

We will also have some RSC planned biking and hiking trips in 2023, so please come along and join us on one of these trips.

Wishing you all a Merry Christmas and a happy New Year.

Catherine Gafa
RSC President



Turoa skifield. Photo: Rangatira ASC.

THROUGH THE LODGE WINDOW

Ruapehu endured its worst snowfall for many years, putting pressure on RAL facilities and the RSC finances.

RAL on August 24th closed Turoa for a week and laid off a third of its staff, due to a lack of snow and visitors. It reopened a week later with only the High Noon skiable.

CEO Jono Dean said that with fewer facilities operational, the ski area management teams had to rationalise efforts heading into the second half of the winter season.

Turoa finally closed on October 4th. Whakapapa closed on October 23rd.

Ruapehu had a good dumping of snow at the start of the season but after that the lower slopes were almost bare, and heavy rain did not help.

Best news: There was good skiing on the three T-bars at Whakapapa. The Delta chair also ran.

Bad news: The Staircase and Rockgarden had almost no snow.

Tough calls: Due to no snow and few

bookings, RSC closed the Hut on August 31st. The Lodge was closed on October 10th.

More bad news: The Club champs were cancelled due to low booking numbers.

What a difference!

Monday August 22nd brought news that the ski season at Ruapehu was shaping up as the worst in living memory, with rain washing away much of the already scarce snow.

Meanwhile reports from the South Island were calling it an “epic” season with massive snowfalls. Some skifields extended their seasons.

Due to a lack of snow causing a health and safety issue, the North Island secondary schools skiing championships were cancelled for 2022.

NIPS and the Mini-X Games were cancelled. The North Island primary and secondary school snowboard competition was cancelled.

The volcanic alert level for Lake Taupō was raised from 0 to 1 in mid-September after more than 700 tremors were recorded there since May.

**THE
RUAPEHU SKI CLUB**

(inc) Founded 1913

P.O.Box 8064, Newmarket,

Auckland 1149

Telephone: 0-9-377 3856

Email: admin@rsc.org.nz

Website: www.rsc.org.nz



President: Catherine Gafa

Vice-Presidents: Carl Burling,
Liza Fitzsimmons, Damon Forsyth,
Marion Quinn, Donald Webster

Secretary: Louise Blair

Treasurer: Sonia Quinn

Immediate Past President:

Phill Thomass

Captain: Simon Hunt

Vice-Captain: Paula Cooper

Committee: Adrian Adriaansen,

Drew Blair, Ron Bonfrer,
Nichola Crouch, Denise Ditchburn,
Sam Hood, Fiona Lovelock,
Kevin Schluter

Patron: Peter Brady

Patroness: Barbara Scelly

Auditors: Hart and Co

Admin Officer: Ceana Priest

Heritage Fund Guardians:

Robin Dallas, Bernard Smith,
Catherine Gafa, Phill Thomass

Fund Treasurer: Mike Wardle

Glacier Hut Custodian:

Bernard Smith

It was the same in late November due to continued small earthquakes. An alert level of 1 means “minor volcanic unrest”.

There have been 17 previous episodes of unrest over the past 150 years, though the last eruption at Taupō volcano was around 232AD.

Ruapehu remains at level 1. Whakaari (White Island) is at level 2.

Contraception has been used for the first time in efforts to slow down growth in the Kaimanawa wild horse population near Ruapehu.

This year’s wild horse muster saw 88 horses moved to approved homes.

It also saw the introduction of a drug which was injected into 60 mares. The vaccine renders female animals temporarily infertile.

Ruapehu’s retiring district mayor Don Cameron said cycling is now a major drawcard for the district, rivalling snow sports.

“When we put in the Old Coach Road trail we were hoping for 15,000 riders a year. We had 40,000 last year, well above expectation.

“The Sky Waka (gondola) has also made a huge difference, getting people up there to play and enjoy a bite.”

Weston Kirton, who was mayor of Ruapehu District from 1995 to 2001, has made a comeback 21 years later and is the mayor again.

A Taumarunui born and bred farmer, Kirton lives on a lifestyle block that is part of a Manunui dairy farm run by his family since 1923.

The deadline for the March Bulletin will be **Friday February 17th.**

All items should be with the Editor in Wellington by then.

THE BULLETIN

Founded in 1936 by Jock and Fizzie Graham.

Editor: Alan Graham, 63 Messines Rd, Karori,
Wellington 6012.

Telephone: 04-476 4598.

Email: alanjograham@xtra.co.nz

Advertising: admin@rsc.org.nz or 09 377 3856

WORK PARTY DATES

RSC's working party dates for the coming summer are:

January 21st-22nd

February 25th-26th

March 25th-26th

April (Easter) 8th-9th

May 27th-28th

SUMMER PROMOTIONS

With such a tough winter, RSC would appreciate any promotion of the Club to your non-skiing friends who may enjoy biking and hiking in Tongariro National Park, or at Ohakune.

It's only \$98 for senior summer membership, and they are welcome to bring three family members or guests too.

So it is a super affordable way to enjoy the Club's facilities outside of winter. Please share this info your friends.

*** Our administrator Ceana is now operating on reduced summer hours between Tuesday and Friday from 9am to 2pm. Feel free to text or email outside of these hours and she'll be in touch asap when back in the Office.

NEW MEMBER

RSC welcomes the following new Summer member:

Dene O'Kane (Waiheke Island).

SAVE RUAPEHU GROUP

The RAL shareholders and life pass holders group has become more active this year in response to the problems faced by RAL.

The group was originally created in 2016 and currently has 3000 members, all of whom are life pass holders or shareholders.

It has a website and has been acting as an informal representative of life pass holders in their role as a creditor of RAL.

The group's organisers are a mix of local business owners, shareholders, life pass holders, and mountain club leadership.

Two of its leaders Sam Clarkson and Robert Krebs were elected by life pass holders to represent them, as creditors of RAL, in discussions with the administrators PwC.

NEW AGE SKI LIFT

Doppelmayr of Austria says it is building a new kind of "new age" ski lift that we will all be riding in the years to come.

The gondola uses three support cables to provide a more stable uplift, carrying more people in each cabin.

There will be cabins for up to 20 people (12 seated, six standing) and the lift will carry 8000 skiers per hour.

It will have a smaller footprint for stations, easier construction and low maintenance.

NEW FUNDS FOR RAL

Ruapehu Alpine Lifts has received a \$4 million rescue package, partly with help from the government, as it tries to make it to the next ski season.

Voluntary administrators PwC who took over the company in October said RAL now needs another \$9 million dollars to keep its two skifields operating.

Administrator John Fisk said the \$4 million from the Crown and ANZ will provide emergency funding that will give PwC time to put together a plan to ensure the best possible opportunity to open again in 2023.

Fisk said the money would help RAL to keep staff on over summer, to prepare the mountain for the winter season.

CROWDFUNDING. Life pass holders and shareholders may be asked to chip in money (say \$2500) to keep the skifields open. Early indications are that many will agree to pay.

John Fisk said there would be a watershed meeting of creditors before Christmas. They would be presented with a restructure plan for RAL and asked whether to accept it, or if they want to enter into liquidation.

RAL on October 11th appointed voluntary administrators to operate the company.

The administrators, John Fisk and Richard Nacey, of accounting firm PwC, will look to determine the most appropriate way forward to maximise recoveries for creditors.

In a statement RAL said its directors explored several options, including a capital raise and a request for additional Crown funding, but had not been able to secure the required level of capital.

RAL lost almost \$6 million last year and is in debt of \$44 million.

OPTIONS.

1. Trade the way back to profits. Difficult. Ask life pass holders to pay \$2500 each. Plus a future levy of up to \$250 per year for two to three years.
2. Sell assets. Difficult. Lifts at Turoa have little market value. No obvious buyer in sight.

Voluntary administrator John Fisk said managing RAL is a challenging assignment. For the business to continue, the assets would probably end up being acquired by a new entity.

“The worst possible situation here is liquidation, where snow groomers and vehicles and movable equipment are all sold off piecemeal.”

That would trigger a make good provision in the RAL-DOC access arrangement and the cost to remove all the infrastructure on the mountain would be enormous.

“If you had to take off not just the above ground infrastructure, but below ground as well you look at all the piping and concrete foundations and the number of buildings, as well as the number of lifts.”

*** PwC handled the 20000 receivership of Turoa which led to a takeover by RAL. John Fisk was on the team at that time.

*** PwC said that if RAL were to go into liquidation, the cost of removing the lifts from the mountain would fall on the Government. It would cost around \$100 million and be years of work.

*** Tourism Minister Stuart Nash has called for RAL to diversify to cope with poor snow years.

*** Fisk said it is a unique voluntary administration because it needs to take into account not just financial issues to make the business sustainable, but also cultural issues and the social issues for the region.



King Charles III has a Swiss ski lift at Klosters named in his honour.

CHARLES THE SKIER

There is no published information to say the Queen Elizabeth II who died recently aged 96 was ever a skier, but her son King Charles III certainly is a snow sports enthusiast.

Charles has frequently visited Klosters in Switzerland and skied there so often that a skifield cable car there is named in his honour. Princess Diana was also a skier.

In 2018 Prince Charles celebrated 40 years of skiing at Klosters.

The Daily Mail said: “Over the decades, he has transformed into an accomplished, fast, fearless, skier, unafraid to tackle anything, pushing himself to the limit and taking many guests.”

As an amateur artist Charles is never without his sketchbook, even on the slopes. He has a little tip to share. To de-ice his brushes he pours a little vodka into the water he uses to clean them.

Charles’s wife Queen Consort Camilla is not a skier. “She doesn’t like heights and doesn’t like the cold,” says a friend.

FATAL AVALANCHE

King Charles III in 1988 was in a party of skiers which lost a friend in a fatal avalanche in Switzerland.

Prince Charles was on holiday at Klosters and was skiing on Gotschnagrat Mountain with mountain guide Bruno Sprecher, family friends Major Hugh Lindsay and Patti Palmer-Tomkinson, plus a Swiss police officer.

The avalanche began above the group. Some were able to take cover but Hugh Lindsay and Patti Palmer-Tomkinson were caught. She suffered severe leg injuries while he was thrown 400 metres down the slope and was killed.

Princes Charles and others were not injured and they tried frantically to dig their friends out. Charles credited Sprecher with saving the life of Patti Palmer-Tomkinson.

Princess Diana was on holiday with Prince Charles but she and sister-in-law Sarah Ferguson chose not to ski that day.



Left: Lodge chef Teiti Majik Nepia pauses on her walk up the Rockgarden. **Right:** RAL's Turoa manager Johan Bergman.

TUROA EXPLANATION

Turoa manager Johan Bergman explains why Turoa closed early for the season on October 4th.

“After a number of hopeful assessments, a decision has been made today, to close Tūroa for the 2022 season. The damage is just too extensive, and rebuilding is not a possibility.

“It has been one hell of a season for the crew. They have sought out the impossible, and made the best of what they were given.

“We know that some epic riding was had, albeit over fewer days than we had hoped.

“There is still some great spring skiing and riding to be had at Whakapapa, and we look forward to welcoming you all back for winter 2023.”

WORLD TRAIN RECORD

The world record for the longest passenger train has been broken in Switzerland.

Rhaetian Railway (RhB) claimed the record after the 1906 metre-long narrow gauge train passed through the Unesco World Heritage route from the Albula Tunnel in Preda to the Landwasser Viaduct.

The record attempt used 100 cars (25

units of four carriages each) to celebrate the 175th anniversary of Switzerland's first railway.

The seven drivers could not communicate with each other via radio or cell phone in the many tunnels.

A temporary field telephone system was set up and specially modified software allowed the drivers to control the train.

The route followed part of the line taken by the world-famous Glacier Express since 1930, taking in its extraordinary spirals.

BILLIONS SAW GAMES

A total of 2.01 billion viewers tuned in to watch coverage from the Olympic Winter Games at Beijing in 2022 across linear TV and digital platforms.

Viewers around the world watched a combined 713 billion minutes of Games coverage.

Olympics web and app platforms reached 68 million unique users during Beijing 2022.

Olympic social media achieved 3.2 billion engagements throughout the Games period, attracting more than 11 million new followers across various platforms.

RSC PROJECTS SAVE

RSC Technology and Building Automation Projects save RSC \$179,000 over the six years 2016- 2021. Part 1.

In 2015, with the Ski Club's annual power bill costing a Whopping **\$74,524** for the year, I approached the then Treasurer Colin Defreyne and asked him if he would like me to assist the Club in reducing this ever-increasing cost. Colin's response as Treasurer was obviously very supportive if it meant the Club would end up spending less.

The first step (while involving a lot of time number crunching 6000 data points from 2 years worth of downloaded meter data from our 4 buildings) allowed us to firstly understand each building peak usage, and the times these peaks occurred, resulting in us going back to The Lines Company and negotiating a reduced line capacity for each of our buildings based on this historical data.

That achieved us an immediate saving of \$16,000 per year, in reduced line capacity charges, and a very happy Treasurer. (In 2016 our power bill had dropped to \$58,812.)

The second step was to look at where energy savings could be made, (resulting in less energy costs) and where we could further reduce our peak demand, (thereby reducing the fixed line capacity charges further).

At the time, the hot water cylinders in the Lodge were very old (and at the point of failure) and they often did not meet the hot water requirements of the building, and in particular the men's and women's showers. We were also often experiencing frozen and burst water pipes as the old tracing system on them was past its best before date and had failed.

A plumbing upgrade was proposed to the Committee at the Nov 2017 mountain

meeting to replace the five old water cylinders in the Lodge with two new larger ones as well as replacing as much of the old copper plumbing with a new "freeze resistant" thermoplastic pipe.

Also upgrading the plumbing to a "mains pressure" system and installing Micro filtration and UV sterilisation of the water to meet the highest drinking water standards.

I had also investigated more efficient heating options for the hot water, and discovered Mitsubishi Black Diamond Electric had some new high tech hot water heat pumps that could create hot water even when the outside temperature was as low as - 150 Celsius.

Depending on the actual outdoor temperature, these would only use 30-40 percent of the power for the Lodge's hot water requirements as opposed to normal heating by electric water heating elements.

Mitsubishi Black Diamond was very supportive of the Club and offered the two hot water heat pump units, and a separate heat pump for the Lodge drying room at half price. This seemed too good of an offer not to take up.

Not to be satisfied with that, however, I also applied to EECA in Dec 2017 for a grant to help fund this "novel" project in an alpine environment, something which had not been done anywhere in New Zealand yet.

We were successful in that application and finally in Dec 2018 EECA approved our application and agreed to provide \$12,000 +gst to help fund this project. (Providing we fulfilled the criteria).

The total cost of this project was estimated to be \$82,000 (less the \$12,000 EECA grant) and at the March 2018 Committee meeting this project was approved.

We therefore had a very busy time in the autumn of 2018 removing all the old and now redundant plumbing from the Lodge (some done by enthusiastic volunteers at

work parties) and then installing the new plumbing system, hot water heat pumps and the new heat pump for the drying room. (again done with some Volunteer labour) and assisted with expert contractors - Excel Refrigeration, Leviene Plumbing, and Mitsubishi Black Diamond.

This was also when we installed the Club's first building management system (BMS) which allowed us to remotely monitor and control the hot water system and also the drying room.

After almost a dozen trips to the mountain for this project, the new system was finally commissioned and up and running just days before the 2018 ski season commenced.

We did experience a few teething problems early in the season as we learnt

to understand how best to operate and control it.

Thanks to the assistance of some onsite members (Liza Fitzsimmons) we were able to sort most of these out during the first period of heavy demand placed upon it in the July school holidays.

The control system was further optimized during the season and as a result of this, the Club's power bill in 2018 had reduced even further.

Work didn't stop there and further initiatives were implemented in the Lodge, Hut and the Chalet in 2019, 2020, 2021 and 2022, resulting in the Club's power bill decreasing even further to **\$27,723 in 2021**

Part 2 on this will be in the next Bulletin.

Damon Forsyth



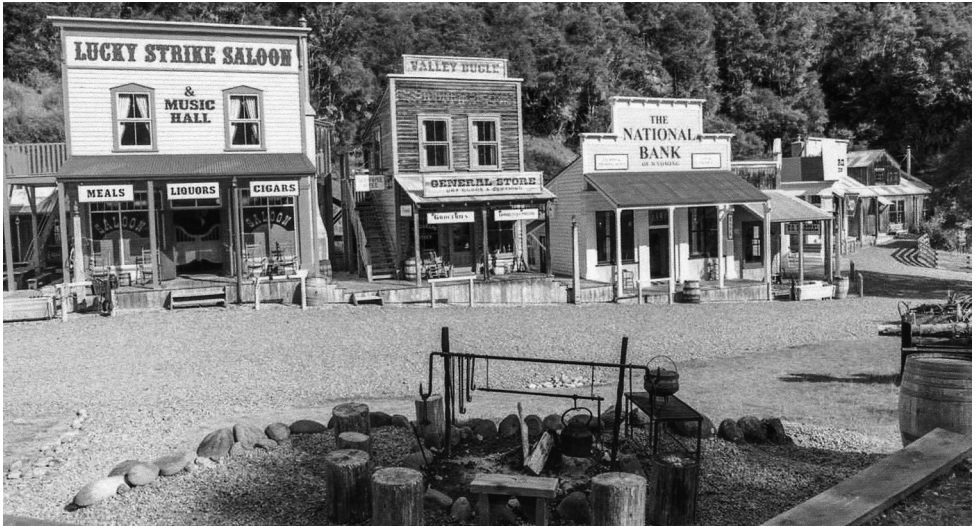
RSC Technology and Building Automation Projects saved RSC \$179,000 over the six years 2016- 2021.



Pictures of RSC Technology and Building Automation Projects.



Upper: This photo of Whakapapa near RSC Lodge was taken in mid-winter, not in the spring thaw. Photo: Tim Sharp **Lower:** Farewell to Linda. From left: Mandy Burling, Jennifer Moffat, Linda Rubi, Brent Moffat, Carl Burling, Will Geddes, Richard Nelson, Catherine Gafa, Johnny Sanders (Ngauruhoe) and Damon Forsyth.



Mellonsfolly Ranch near Raetihi is on the market. A new sheriff is needed.

WILD WEST FOR SALE

Mellonsfolly Ranch, a wild west replica town near Ruapehu, is for sale at \$11.6 million.

The town, which resembles an 1860s Wyoming frontier town, includes a valuable manuka honey business.

It belongs to Rob Bartley, who owns an aluminium car parts manufacturer with factories in New Zealand and Canada.

Bartley bought the Mellonsfolly town off a friend in 2012 but says now the time has come to sell off the property, as he deals

with some health issues.

Features include 10 period buildings, such as a licensed saloon, a courthouse that doubles as a cinema, a sheriff's office, a newspaper office and a billiards lounge.

There are 13 guest rooms that can accommodate a total of 22 tourists, plus a three-bedroom home-for the property manager, and two staff houses that can accommodate six people.

Staff wear cowboy outfits and encourage visitors to do the same. Tourists are given a gun which does not have bullets, but gas canisters that make shot-like sounds.

JOHAN KLISSER

Johan Klisser MNZM, known as Han, who died recently aged 95, was a prominent RSC member in the 1960s and beyond.

When his daughter Helen was a good ski racer at both local and national level, Han and his bakery sponsored ski racing through his brands Vogel's and Reizenstein's.

The obvious joke was that his sponsorships were worth "a lot of dough".

Han was from the Netherlands and survived the Holocaust where his parents and brother were victims.

On arrival here aged 24, Han first worked for health bread maker Dr Max Reizenstein, a Jewish refugee with a bakery in Ponsonby.

Han and his wife Janna (they met in Auckland) then opened Klissers Farmhouse Bakery in Howick.

The style of bread was something new in New Zealand but locals soon came to enjoy the artisan style which was based on a recipe from Swiss nutritionist Alfred Vogel.

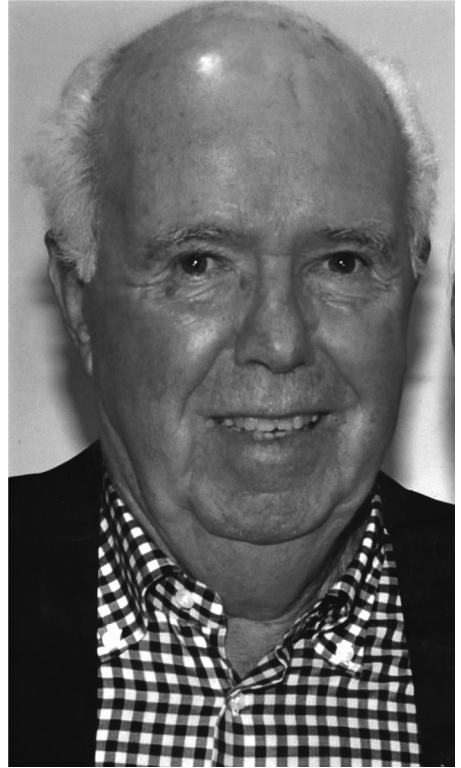
Han was a regular skier at RSC Lodge and assisted at ski races all over the country while Helen was racing.

He sold the bakery in 1990, by which time Vogel's was selling 500,000 loaves a week.

After that Han and his wife bought a large station in Canterbury, farming merino sheep, red deer, Angus cattle and Icelandic horses, plus some grapes, with the help of a farm manager.

Han was awarded the MNZM in 2004.

We offer the condolences of RSC to the Klisser family.



Johan Klisser

Helen Klisser, once a member of the NZ ski team, is these days a photo journalist who is back in NZ after 33 years living in the US.

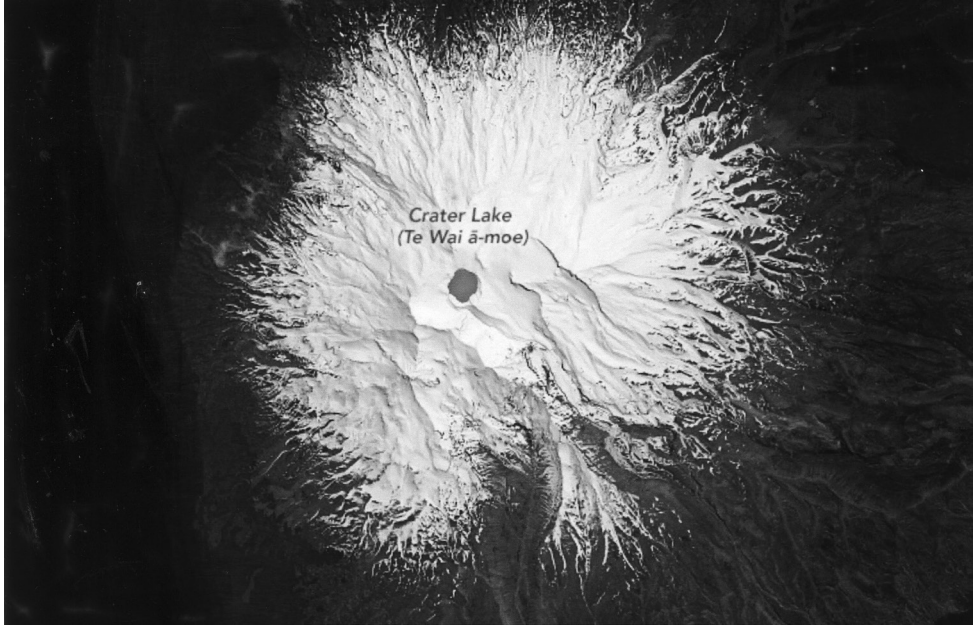
Born and raised in Auckland, she was a Sportswoman of the Year at Auckland University, where she studied art history.

Her ski career ended when she broke her back in a downhill race in Switzerland.

She spent three months in hospital and defied doctors when she went on to race again, coming runner up in the national championships in her first race back when statistically she should never have walked again.



RSC skit night with Linda at the Chalet. Photos: Nicola Gordon.



Upper: NASA took this photo of Ruapehu from the International Space Station. Whakapapa is at the top right. **Lower:** Skiing at Turoa. Photo: RAL.

RSC CALENDAR OF EVENTS

Dec 2022		DOC summer programme
Jan 2023		RSC summer events
	21	Goat Adventure run
	21-22	Working parties
Feb 2023	25-26	Working parties
	26	Bridge to Nowhere, Club trip
Mar 2023	11	Ring of Fire run, Tussock Traverse
	25-26	Working parties
April 2023	8-9	Working parties (Easter)
	29-30	42 Traverse, run/bike, Club trip
May 2023	1	Ski season bookings open
	27-28	Working parties
June 2023		AGM at Auckland
TBC.....		Tupapakuria Falls Track walk, Club trip.

DOC ANNIVERSARY

The Department of Conservation this year is celebrating 30 years of Great Walks and is encouraging Kiwis to get out and explore Aotearoa New Zealand's natural landscapes.

With a network of more than 950 huts, 200 campsites and 30 cabins across the country, DOC has a place to stay to suit everyone this summer.

They are situated in our country's most special, serene and scenic places.

Visitors to Mt Taranaki are being urged to obey the rules and leave their family pets at home, after DOC staff observed jacket-wearing domestic cats being taken into Egmont National Park.

DOC's staff did a double-take when they encountered pet cats being carried in backpacks by their owners on Mt Taranaki.

Cats and all other domestic animals are

not allowed in any National Park as they pose a threat to endangered birds such as kiwi and whio, and other native species including geckos and insects.

ZOI DONATES BOARD

Zoi Sadowski-Synnott has donated to the Wanaka Snowsports Club the snowboard she used to win gold medals at the Olympic Winter Games and the Winter X-Games.

It will be auctioned online as part of the club's Snowmelt fundraiser.

Fellow Olympic gold medallist Nico Porteous has donated a pair of his skis.

There are also heliskiing packages, a day filming with videographers The Beards, a day skiing with World Cup ski racer Piera Hudson, Lego and holiday getaways.

Snowmelt, is focused on helping up and coming and elite athletes travelling to the Northern Hemisphere in 2022-23 for a long winter of training and competitions.



Spot the difference. *These two photos of the Staircase were taken on September 30th. Upper: 1992. AG photo. Lower: 2022. RSC Photo.*



The Remarkables skifield at Queenstown. The new lift will go to the top right of this scene. Photo: Alan Graham.

REMARKABLE FUTURE

The Remarkables could pass Coronet Peak to become Queenstown's skifield of the future, according to the NZ Ski which runs both areas.

In the latest of a cluster of ambitious developments, the company has applied for resource consent to replace the existing 32 year-old four-seater Shadow Basin chairlift with a faster and bigger chairlift in 2024.

A \$15 million six-seater would travel five-times faster than the old lift, reducing travel time from 8.20 minutes to 3.30 minutes.

The top terminal would be 50 metres higher than the current station. That would give access to another 46

hectares of ski area including the chutes and Sunrise Face, which people currently hike to.

The next big application will be for a 230 metres tunnel through the mountain to increase skiable terrain from 385 hectares to 900 hectares.

NZ Ski chief executive Paul Anderson said the Remarkables is now more popular than Coronet Peak, largely due to the fast-growing residential areas nearby and large-scale investment from 2014, which increased visitation by 40 percent.

The Remarkables base building sits 400 metres higher than nearby Coronet Peak, meaning it retains more snow. The northern aspect means it is sunny.



Jumping at Ruapehu. Turoa (upper) and Whakapapa (lower). Photos: RAL.



Upper: Hiking up to the start of the Ngauruhoe Trophy race in The Gut. **Lower:** Snowboard racing at Whakapapa. Photos: NSC.



The RSC juniors won second place in the Rangatira Trophy race at Whakapapa. They are. Ihakara Karaitiana, HineArikiAio Karaitiana, Hannah Evans, Sammy Evans. Photo: RSC.

RANGATIRA TROPHY

Rangatira Alpine Trophy

Rangatira, Taupo, Ngauruhoe.

The grand prize, the Rangatira Alpine Trophy, is awarded to the fastest club. The winner is determined by the aggregate of the five fastest times taken from members within the same club.

These times must include one junior, one master or veteran and one female. Each person can only qualify for one of these criteria.

Fastest Junior Teams

Taupo, RSC.

Fastest Masters Teams

Rangatira Rusties, Rangatira Real Rusties, Taupo Masters.

Fastest Open Teams

Rangatira Rockets, UASC Uphill, Taupo.

Fastest Snowboard Teams

Rangatira Ringins, UASC Boarders.

Fastest Open Individuals

Nick Moss and Aaron Moss (male).

Monique Moss (female).

We are very grateful to RAL who produced a race course in difficult weather conditions.

NGAURUHOE TROPHY

The race was held above The Gut with passing cloud and entailed quite a climb of about 300 metres to the start point.

RSC placed third in the Masters division. The team was Zednek Kudrna, Carl Burling, Chris Woudenberg and Slavka Kudrnova.

Open teams:

Graduates, Rangatira, Taupo.

Junior teams:

Rangatira, Ngauruhoe, Havelock.

Masters teams:

Taupo, Rangatira, RSC.

Fastest open individuals:

Monique Moss and Nick Moss.

Fastest juniors:

Georgia Marshall and Griffin Hunt.

Fastest masters:

Trish Mau and Paul Wood,

Fastest snowboard:

Rachel Stevens and Bill Song.

There were 160 racers.

BIG NZ CASH BOOST FOR SNOW SPORTS

The Government has made a huge investment in ploughing more than \$20 million into winter sports after the success of NZ teams at this year's Olympic Winter and Paralympic Games in Beijing.

Snowboarder Zoi Sadowski-Synnott and freeskiier Nico Porteous won the nation's first Winter Olympic gold medals after 70 years of competing. Zoi also won a silver medal in her second event.

There were medals for Paralympic team, too, as alpine skiers Corey Peters won gold and silver while Adam Hall won two bronze.

After Beijing, Ruby Andrews (gold), Gustav Legnavsky (gold), Cam Melville Ives (silver) and Luca Harrington (silver) won medals in the junior world championships.

Jess Hotter became the first NZ skier to win the Freeride World Tour.

Sports Minister Grant Robertson announced the funding pledge ahead of the Olympic Winter and Paralympic Games in Milan-Cortina in 2026.

"NZ's unprecedented success earlier this year reflects the raft of young talent emerging across winter sports," Robertson said.

Snow Sports NZ chief executive Nic Cavanagh said the funding boost was fantastic.

"I am incredibly proud of our team for the results they have achieved over the last four years and the way the athletes have conducted themselves on the world's slopes," he said.

Cavanagh added: "A key to delivering in results in the next four years is balancing the rigours and demands of being a high performance athlete and the intrinsic joy they derive from living and

performing in the mountains."

"High Performance Sports NZ is partnering with Snow Sports NZ to ensure there is balance by investing in wellbeing initiatives."

WIN FOR MISCHA

After a challenging five weeks trying to work through a back injury which forced RSC member Mischa Thomas to miss the Winter Games NZ, she lined up for the final event of the Volkl NZ Freestyle Series.

Things didn't start as planned in her first run, sending it a bit too big on a 540 and crashing, so the pressure was on for run number two especially with other competitors putting down solid first run scores.

Mischa handled it like a pro and despite Taylor Breen improving on her first run score with an 86.0, Mischa went big again for 90.33.

This win means that Mischa is also the overall series champion in the Open Women category for 2022. Plans are under way for the Northern Hemisphere season which will likely see her training in Switzerland again for about three months.

ZOI WINS IN OZ

NZ snowboard star Zoi Sadowski-Synnott won the best trick award at the grassroots Bush Doof snowboard contest held at Thredbo (NSW) in September.

The event was hosted by Australia's Olympic bronze medallist Tess Coody at her home ski resort. It was big rail jam with a wide range of rails.

Mia Brookes aged 15 from the UK took home the trophy for best female rider.

Back home, Zoi was reported to be the first woman in the world to perform a switch back 12 made up of four rotations, two while holding the snowboard.



Piera Hudson

PIERA QUALIFIES

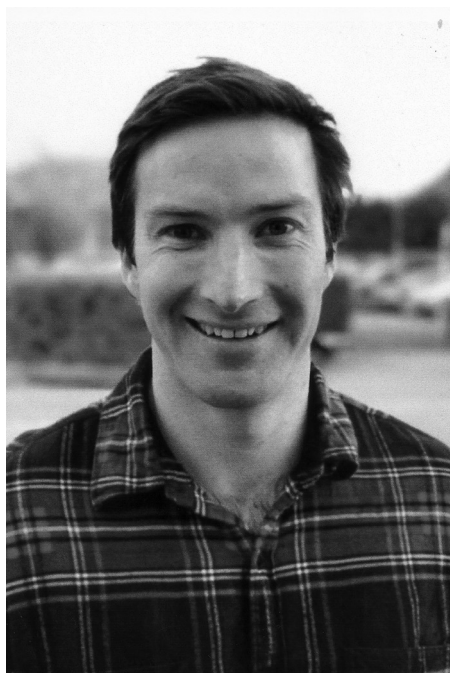
Piera Hudson (NZ) has retained her yellow bib as the top slalom skier in NZ or Australia, which qualifies her for a start on the alpine World Cup slalom circuit.

Hudson, aged 26 from Hawkes Bay, can also race in Nor-Ams and Europa Cups, which helps with her budget as she gets get free accommodation at some races.

She is also the second ranked NZ skier in giant slalom, behind Alice Robinson.

Hudson missed selection for last year's Olympic Winter Games but has set her goals on making the 2024 Olympics in Italy.

Piera says: "I started skiing at four years old. At eight I was scouted for ski racing. From there, I have dedicated my life to my love of speed and pushing my own limits, racking up over 30 back-to-back winters while representing New Zealand on the world stage."



Willis Feasey

NZ SKIING CHAMPS

Piera Hudson and Willis Feasey won the NZ alpine skiing championships for 2022, being the best NZ finishers in the nationals which were raced at Coronet Peak.

Women's slalom: Piera Hudson (NZ) 1.40.80, Elena Stoffer (Switzerland) 1.40.85, Lara Baumann (Switzerland) 1.42.83.

Women's giant slalom: Elise Hitter (Switzerland) 1.41.42, Piera Hudson (NZ) 1.41.54, Lara Baumann (Switzerland) 1.42.49.

Men's slalom: Jędrzej Jasiczek (Poland) 1.28.79, Dionys Kippel (Switzerland) 1.28.80, Minick Jung (Korea) 1.30.37. Best NZ: Willis Feasey sixth.

Men's giant slalom: Ian Gut (Liechtenstein) 1.37.62, Willis Feasey (NZ) 1.38.01, Andreas Amdahl (Norway) 1.30.04.



Alice Robinson (NZ) wins a giant slalom race at the 2022 Winter Games NZ. Photo: WGNZ.

WINTER GAMES NZ

Winter Games NZ., the southern hemisphere's biggest snow sports event, was held again this year after two seasons of disruption due to Covid-19.

It had 16 events across alpine skiing at Coronet Peak, freestyle skiing and snowboards at Cardrona and freeride at The Remarkables. There were 400 athletes from 23 nations.

ALPINE.

More than 100 skiers from 15 nations took part in the alpine ski racing. Winners of the giant slalom were Alice Robinson (NZ) and Andreas Zampa (Slovakia).

Women's super-g: Candace Crawford (Canada). Robinson was third.

Men's super-g: Willis Feasey (NZ).

FREESKI (Event winners).

Women's halfpipe: Hanna Faulhaber (US).

Men's halfpipe: Gustav Legnavsky (NZ).

Women's slopestyle: Ruby Andrews (NZ).

Men's slopestyle: Luca Harrington (NZ).

SNOWBOARD (Event winners).

Women's slopestyle: Mari Fukada (Japan).

Men's slopestyle: Jesse Parkinson (Australia).

Women's halfpipe: Chaeun Lee (Korea).

Men's halfpipe: Gaon Choi (Korea).

FREERIDE (Two star event winners).

Women's snowboard: Jaimie Figueira (Canada).

Men's snowboard: Ronan Thompson (NZ).

Women's ski: Jessie Violet (NZ).

Men's ski: Tenra Katsumo (Japan).

STOMP BIG AIR (Event winners).

Women's snowboard: Miyabi Onitsuka (Japan).

Men's snowboard: Valentino Guseli (Australia).

Women's freeski: Olivia Asselin (Canada).

Men's freeski: Max Moffat (Canada).



Upper: Ski touring on the Mannering Glacier at Mt Cook. Photo: NZ Alpine Club.
Lower: Skiing at Mt Dobson in mid-Canterbury. Photo: Dobson website.



This is believed to be the first photo of skiing in NZ. It shows Marmaduke Dixon and Guy Mannering using home-made skis at Mt Cook in November 1893. There are no known photos of the first skiing in NZ which was done by Norwegian miners on the Otago goldfields in the 1870s. Mannering was an accomplished alpine photographer, a racing cyclist, a fisherman, a singer and a golfer. He climbed the Matterhorn when aged 60. Dixon was one of Canterbury's first colonists. He was a farmer and local body politician.

WORLD FREERIDE

NZ skiers Jess Hotter and Blake Marshall won the gold medals in four star freeride events in September.

These were contested in the Alta Chutes area of The Remarkables skifield at Queenstown as qualifying events for the Freeride World Tour.

Roland Morley-Brown (NZ) won the men's snowboard event while Maria Kuzma was second in the women's snowboard.

Freeride, which is not an Olympic event, allows skiers to select their own lines down steep and difficult slopes. They are judged for choice of slope and their performance.

Women's freeride: Jess Hotter (NZ) 84.67, Kelsey Wittels (US) 82.67, Jessie Violet (NZ) 77.67.

Men's freeride: Blake Marshall (NZ) 91.67, Ben Richards (NZ) 87.33, Henry Zakowski (US) 84.44.

Women's snowboard: Melissa Brandner (Britain) 68.00, Maria Kuzma (NZ) 65.00, Zoe MacGeorge (Switzerland) 56.67. Claire McGregor (NZ) was fourth.

Men's snowboard: Roland Morley-Brown (NZ) 80.33, Ronan Thompson (NZ) 74.00, Niklas Meindl (Switzerland) 69.67. Angus Gray (NZ) was fourth.

*** The Remarkables has announced that from 2022 it is hosting the Freeride World Tour Academy.

This offers a unique ski and snowboard complete programme which challenges young skiers and riders to push their limits and gain skills to comfortably handle all types of terrain and snow conditions in a safe, controlled environment.

NZ CROSS-COUNTRY

Almost 500 competitors took to the

snow in the NZ cross-country ski champs which were held at the Snow Farm skifield near Wanaka.

They took part in groups ranging from under-14 up to over-80 (one starter).

Cross-country skiing including the winter biathlon is growing in popularity and big groups, mainly of school teams, visit the field.

Winners of the open race were:

Men: Matthew Taylor (Auckland) 31:24, Cameron Avery (Canterbury) 31:37, Tim Robertson (Hutt Valley) 31:44.

Women: Lisa Cross (Auckland) 36:44, Kerry White (Waikato) 37:28, Hannah Miller (Wellington) 37:39.

There was also an interclub relay for teams of two men and two women which was won by Wellington Harrier Athletic.

*** Snow Farm NZ is on Queenstown Lakes District land and is operated by the Pisa Alpine Charitable Trust. There are 55km of trails groomed for cross-country skiing plus 24km of snowshoe trails.

WRIGHT COMES SECOND

For its 30th anniversary the Kangaroo Hoppet ski marathon in Australia welcomed 1000 cross-country skiers from around the world.

The 42km Kangaroo Hoppet at Falls Creek (Victoria) is part of the prestigious Worldloppet Ski Federation of marathon events and is claimed to be the largest annual snow sports event in the southern hemisphere.

Olympic gold medallist Jessie Diggins (US) won the women's race from Julia Kern (US).

Peter Wolter (US) won the men's race from Campbell (Wright (NZ) and Lars Vik (Australia).

There were separate 21km races for juniors and 7km races for children.



Upper: The Cinder Track magic carpet and the Knoll Ridge Chalet. Photo: RAL. **Lower:** Ski racing at Whakapapa. Photo: Ngauruhoe SC.

ACROSS THE SKIING WORLD

What is the only country on Earth that sits entirely above 1000 metres? It is Lesotho and you can ski there.

This small kingdom of 2 million people is entirely surrounded by South Africa and is five hours drive from Johannesburg.

Its skifield is called Afriski and is located at 3200 metres, higher than Ruapehu's summit. The ski season runs from June to August. There is hiking and biking in summer.

Believe it or not! In 1954 an 18 year-old Italian named Stephano Saldi was arrested on a charge of stealing a Swiss T-bar and carrying it back to Italy.

Over six months and several cross-border visits he stole the lift bit by bit, including 400 metres of steel cable.

Saldi erected the tow in Italy and ran it until the authorities figured out the truth and nabbed him. We have no info on what sentence, if any, was imposed.

Verbier (Switzerland) has been named as the World's Best Ski Resort for the second year running at the World Ski Awards.

W Verbier Hotel was named as the World's Best Ski Hotel. Chalet Zermatt Peak was the World's Best Ski Chalet.

Switzerland's LAAX was the World's Best Freestyle Resort and Ski Dubai was again the World's Best Indoor Ski Resort'.

The 10th annual World Ski Awards programme received a record number of votes from ski consumers and the ski industry across the world

New Zealand's best ski resort for the eighth year was Mt Hutt. The best in the US was Deer Valley while the best in Australia was Thredbo.

US freeski veteran Devin Logan

has announced her retirement from competitive skiing.

She won one Olympic silver medal plus many podiums in world champs, X-Games and World Cup events. She has often competed in NZ.

Queenstown has experienced a record winter, with visitor spending significantly higher than in pre-Covid-19 ski seasons.

Expenditure during the ski season months 27 percent higher than in 2019, when the previous record was set.

Destination Queenstown chief executive Mat Woods said the season started with one of the best snowfalls seen in June for a generation, and it continued to fall thick and fast.

In 1967 Denis Hulme, the only NZ driver to win the world Formula One title, was asked if motor racing was dangerous.

His reply was a classic: "It is no more dangerous than skiing at Mt Ruapehu."

A stunning image of a volcano in Iceland has been named the world's best image at the Drone Photo Awards 2022.

The work entitled Big Bang is by French photographer Armand Sarlangue. It shows a secondary fissure happening a few hundred metres away from the main crater of the Fagradalsfjall volcano.

Sarlangue beat entries from more than 2500 photographers in 116 countries.

Ian Gut (Liechtenstein) who won the NZ alpine skiing champs giant slalom race at Coronet Peak this year, is the younger brother of Swiss skiing star Lara Gut-Behrami.

He qualifies for a Liechtenstein passport through their mother. Ian Gut also came fifth in the NZ slalom.

Homes in the \$650 million Mt Cardrona Station development near Wanaka are selling for up to \$2.35 million before they are completed.

Section prices range from \$495,000 to \$1.5 million, with house and land packages starting at \$1.4 million. The first homes are expected to be completed halfway through 2023.

A \$10 million landmark building at the heart of the development will house a restaurant, a members lounge, gym and workout spaces, meeting rooms, reception area, swimming pool and hot pools.

Next year's park and pipe ski and snowboard junior world championships have been allocated by the FIS to Wanaka in August and September.

The FIS Alpine junior world ski championships have been allocated to St Anton (Austria) in January.

Alpine skiing legend Lindsey Vonn has reminded tennis great Roger Federer that he can go skiing now he has retired from professional play.

Federer has several times said he would love to ski but would not do so as long as he was playing tennis.

The Swiss Maestro once played Vonn at tennis on a glacier 3450 metres above sea level as a promotion for Lindt chocolate.

Did the Beatles ever go skiing? They sure did. Their music video for Ticket to Ride was filmed at Obertauern in Austria in March of 1965.

They did some skiing and rode ski bikes, managing a few turns but mostly crashing.

The Beatles were by no means fantastic skiers, but it seemed they knew enough to have some fun.

Kiwi freeride skier Connor Addis has performed the world's first quadruple backflip.

Jumping at Cardrona, the now 19-year-old first attempted the trick two years ago, but quickly learned he needed a much longer ramp.

Last year he was out injured, but this

year has a bigger ramp.

Addis, who comes from Waiheke Island, now heads to Europe in January to compete in a series of qualifiers for the freeride world tour.

Prominent US ski mountaineer Hilaree Nelson has died after being caught in an avalanche while skiing in Nepal.

Nelson, aged 49, the partner of another ski mountaineer, enjoyed a famed career spanning two decades.

She was killed when skiing below the summit of Mount Manaslu, the world's eighth-highest mountain.

Vail Resorts has announced new technology allowing customers to use their phones to get on ski lifts.

The company plans to test the technology to allow patrons to store and use lift passes on their phones at some of its ski areas this year, with full implementation slated for the 2023-2024 ski season.

The company says plastic cards or printed out ski lift passes will still be available for people who want to use them.

The Manganui skifield on Taranaki Maunga, which has been known to open as early as May, did not turn on its T-bar this season until October 7th.

The skifield is run by the Stratford Mountain Club. It came near to opening in late July but had no skiable snow after that until October. Manganui is too low to have snowmaking.

Snowboard star Zoi Sadowski-Synnott was a special guest and "draw assistant" when the draw for the 2023 women's football (soccer) World Cup in NZ was made at Auckland.

"Football was my first love as a kid so it was quite unreal to be on stage with these legends of the game," she said.



CLUB ITEMS & SERVICES FOR SALE

RSC Administration Office, P.O. Box 8064, Newmarket, Auckland 1149

Website: www.rsc.org.nz

email: admin@rsc.org.nz

Lockers

Ski and gear lockers are available in the Hut, Lodge and Turoa buildings.

Please email admin@rsc.org.nz for current availability.

Annual Locker Rental Rates:

Charged at the date of allocation.

Ski Locker \$57.50

Gear Locker \$28.75

Club Items

(Add \$3 for each order to be posted)

Name Badge (free to new members) \$12

PHONE NUMBERS

RSC Office	09-377-3856
Lodge	07-892-3824
Hut	07-892-3822
Chalet	07-892-3823
Turoa	06-385-8767

NEW MEMBERS COSTS

Attend two working parties.	
Senior joining fee	\$199
Junior joining fee	\$99
Annual senior subscription	\$269
Annual junior subscription	\$98

ACCOMMODATION FEES

Winter 2022 (Effective May 1st 2022)

Senior member	18 years and over	\$58
Teen member	14 - 17 years	\$50
Junior member	13 years and under	\$38
Member's child	7 years and under	\$30
Senior non-member	14 years and over	\$106
Junior non-member	13 years and under	\$71
Life members		\$0
School group children		\$68
School group adults		\$90

Summer 2022-23 (Effective November 1st 2022)

Senior members	\$30
Junior members	\$20
Senior non-members	\$35
Junior non-members	\$25

Note: Ages apply from January 1st 2022